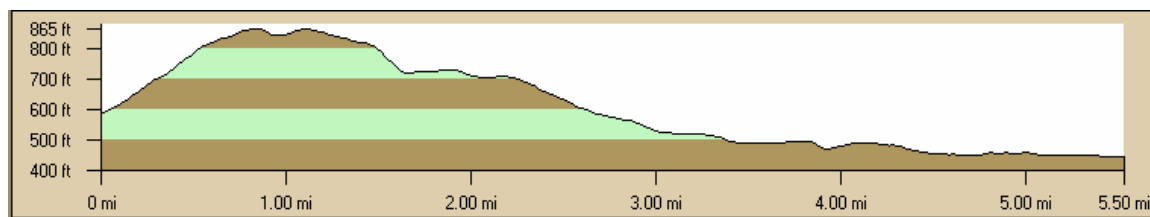
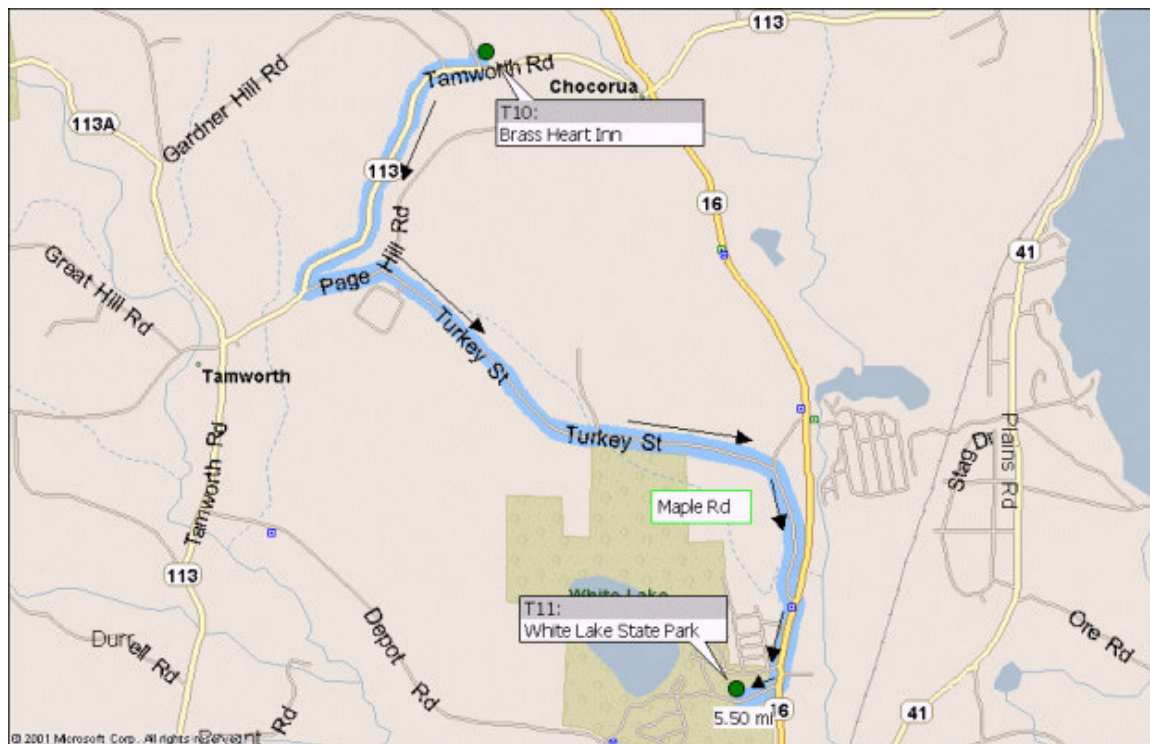




200 miles in 24 hours

# 2007 Course Maps

## Leg 11: 5.5 miles



### NOTES

General: Use caution when running on Rt. 113 and Rt.16; busy roads.

Vehicles enter and exit the park through the same driveway; runners exit the park through the rear.

Parking: Right side in the upper lot; bear right at the fork after entering the park

Restrooms: Bathrooms with coin operated hot showers are located in the upper parking lot.